



NEW

high performance
rainwater
outlets **pipes**
bitumen

depco



SOPREMA



Depco combines strength with flexibility and lightness

SAVE TIME ON THE WORKSITE WITH DEPCO RAINWATER PIPES!

Depco is a range of rainwater pipes with a flexible elastomer bitumen layer collar.

Lightweight, strong and exceptionally reliable, **Depco** differs from other, traditional rainwater pipes by its flexibility, guaranteeing optimum fitting to the shape of the substrate, vertically as well as horizontally.

depco

reliable
practical

Improve your productivity with Depco!

- No need for primer on the collar
- No protecting layer to apply
- No need to cut the collar corners
- No need to adjust to the substrate



Total compatibility with the bituminous waterproofing of the main surface

reliable and practical

PRESENTATION

Depco rainwater pipes work by gravity and consist of a flexible SEBS or SBS elastomer bituminous sheet collar and a pipe outlet (rigid tube) made of 12/10 aluminium. They are assembled by an exclusive, patented expanded crimping process.

The range includes:

- cylindrical **Depco SEBS** devices with collars made from a special membrane (**Sopralene® Flam 180 SEBS Depco**), containing an SEBS binder, allowing compatibility with all **SOPREMA**'s SBS and APP modified membranes.
- tronconic **Depco SBS** devices.

USE

Depco rainwater pipes are used to collect rainwater on roofs waterproofed with **SOPREMA**'s elastomer bituminous or APP plastomer modified bituminous waterproofing membranes, in accordance with the technical rules.

**10 YEARS
MANUFACTURER'S
WARRANTY**

the depco difference

- + Outstanding reliability
- + Optimum adaptation to the shape of the substrate
- + A strong, lightweight product
- + A ready-to-use product (no cold applied primer needed)
- + A safe, environmentally-friendly product (lead-free)
- + A complete range (16 references)
- + Welds evenly
- + **Exclusive patented process**





flexibility adaptability

depco

TREMENDOUS PERFORMANCE:

n Outstanding reliability guaranteed:

Made of elastomer bitumen, the collars of the **Depco** range guarantee an even join with the bituminous waterproofing on the main surface.

n **A flexible, adaptable solution:** **Depco** rainwater pipes can be adapted to any type of substrate as well as to complex shapes. This characteristic is particularly appreciable when the openings are difficult to access or awkwardly positioned.

n **Lightness combined with solidity** give **Depco** rainwater pipes a high degree of impact strength.

n **Reliability:** The tightness of the crimping of each **Depco** is checked using a vacuum device.

TECHNICAL CHARACTERISTICS

NEW	Depco SEBS	
	Components	
	Collar	Pipe
	<ul style="list-style-type: none"> SEBS elastomer bitumen waterproofing membrane with 180g/m² non-woven polyester reinforcement Nominal thickness: 2.9 mm (-5%) Upper surface and lower surface: thermofusible film Collar layer diameter: 320 x 320 mm to 480 x 480 mm according to diameter 	<ul style="list-style-type: none"> 12/10 aluminium tube Pipe height: 500 mm <p>Remark: For \varnothing 50 + \varnothing 63, the end of the pipe is cut at 45°</p>

Minimum diameter of the evacuation pipe in mm	Collection surface (m ²) per water outlet	
	General case	Special case on concrete load-bearing units of non-accessible roof terraces
50 ⁽¹⁾	20	28
63 ⁽¹⁾	31	45
75 ⁽²⁾	44	63
85	57	81
90	64	91
95	71	101
100	79	112
115	104	148
120	113	162
125	123	175
145	165	236

Tronconic Depco SBS	
Components	
Collar	Pipe
<ul style="list-style-type: none"> SBS elastomer bitumen waterproofing membrane with 180g/m² non-woven polyester reinforcement Nominal thickness: 2.9 mm (-5%) Upper surface and lower surface: thermofusible film Collar layer diameter: 400 x 400 mm to 650 x 650 mm according to diameter 	<ul style="list-style-type: none"> Aluminium tube thickness: 12/10 mini Pipe height: 469 mm à 642 mm

Minimum diameter of the evacuation pipe in mm	Surface for rainwater outlet with normal \varnothing (m ²)	Surface for rainwater outlet with increased \varnothing (m ²)
80/160	71	47
95/190	101	67
120/240	161	107
145/290	235	157
195/390	426	284



Depco SEBS

Tronconic SBS Depco

STORAGE

On a flat substrate protected from weather and high temperature variations.

The aluminium tubes, depending on how they are stored, may have small white corrosion marks, which in no way affect their use. These are only defects in appearance, which is why we recommend that they be stored under cover!

complete range

PACKAGING

Weight of rainwater pipes: 1,5 kg on average

Depco SEBS	\varnothing 50	15 units boxes
	\varnothing 63	
	\varnothing 75	
	\varnothing 85	
	\varnothing 90	
	\varnothing 95	
Depco SBS TC	\varnothing 100	10 units boxes
	\varnothing 115	
	\varnothing 120	
	\varnothing 125	
	\varnothing 145	
	\varnothing 145/290	
Depco SBS TC	\varnothing 80/160	15 units boxes
	\varnothing 95/190	
	\varnothing 120/240	
Depco SBS TC	\varnothing 145/290	5 units boxes
	\varnothing 195/390	

MAINTENANCE

Meets technical rules

PRECAUTIONS

Depco rainwater pipes work by gravity: they must be distributed evenly over the surfaces covered and meet the requirements of technical rules.

(1) These diameters are only permissible for small surfaces such as balconies and loggias.

(2) Not permitted on Steel and Wood, where the minimum permissible diameter begins at 85 mm.



easy rapid
depco

ENVIRONMENTALLY FRIENDLY

The **Depco** range differs from traditional lead devices by the natural materials used, which are harmless to man and the environment.

THE USE OF LEAD IS STRICTLY PROHIBITED.

QUICK AND SIMPLE TO INSTALL:

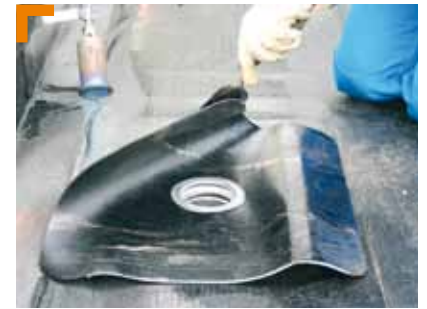
The layer is welded directly onto the waterproofing membrane with no need for a cold applied primer. **Depco** doesn't need any extra reinforcement layer compared to standard rainwater pipes or adjustment to the substrate.

DEPCO VERTICAL IN 4 STEPS

Depco is installed by heat welding with a propane torch.



1. Insert **Depco** into the stack after laying the first layer of waterproofing.



2. Weld the elastomer layer onto the first layer of waterproofing.



3. Lay and weld the second layer of waterproofing, covering the **Depco** opening completely.



4. Leave the waterproofing membrane to cool for a few moments, then carefully cut out the hole in the rainwater outlet.

SINGLE LAYERS:

In the case of a single-layer system, a reinforcement piece protruding 20 cm from the **Depco** collar is laid before placing the rainwater pipe.

installation • depco

DEPCO HORIZONTAL IN 5 STEPS

Installation as an overflow on a balcony.



1. Insert **Depco** into the stack after laying the first layer of waterproofing and the reinforcing angle.



2. Weld the layer onto the first horizontal layer and against the angle already in place.



3. Weld the second layer of waterproofing completely.



4. Apply the self-protected upstand layer.



5. Leave to cool for a few minutes, then carefully cut out the hole in the rainwater outlet.



SOPREMA at your service

Are you looking for a commercial contact to discuss an upcoming job site or a current one?

Do you have questions concerning the use of **Depco** ?

Contact: Export Department

Phone: **+33 (0)3 88 79 84 84**



SOPREMA

14 rue de Saint-Nazaire - BP 60121
67025 STRASBOURG CEDEX 1 - FRANCE
Phone: +33 (0)3 88 79 84 84 - Fax: +33 (0)3 88 79 84 85
E-mail: export@soprema.com - www.soprema.com